



Swift Plus

# Swift Plus

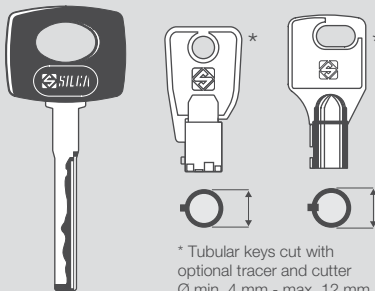
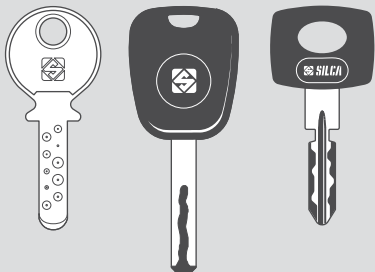
**The mechanical key cutting machine for dimple, laser and tubular keys**

Swift Plus is the mechanical key cutting machine for dimple, laser and tubular keys. Easy and comfortable to use and made with resistant and durable materials, Swift Plus is reliable over time ensuring quality cutting results.



## Swift Plus

*Swift Plus is the mechanical key cutting machine for dimple keys with flat cuts, laser keys with internal, external, double external cuts and narrow stems and, with the use of the optional tracer and cutter, also tubular keys.*



\* Tubular keys cut with optional tracer and cutter  
Ø min. 4 mm - max. 12 mm

**CE** Swift Plus has been designed and manufactured in conformity with CE mark European standards.

## Technical Data

**Power supply:** 220V-230V / 50-60Hz

**Cutter motor:** single phase and speed

**Cutting tools:** HSS (high speed steel) with TiN coating

**Tool speed:** 50Hz: 8000 rpm (+/- 10%), 60Hz: 8000 rpm (+/- 10%)

**Movements:** on three axes via rods and bushings

**Carriage runs:** X axis: 24 mm, Y axis: 50 mm, Z vertical axis: 22 mm

**Dimensions:** Width: 260 mm, Depth: 285 mm, Height: 315 mm

**Weight:** 12 kg

### Clamp optimized for the installation of a wide range of keys

With Swift Plus you can easily clamp a wide range of dimple, laser and tubular keys. The installation of tubular keys is made simpler thanks to a positioning device and an aligning bar that facilitate the correct adjustment of the key heads. The positioning device can be blocked using the levers on the rear of the clamp. You can also fix laser keys with narrow stems thanks to the adapters provided.

### Precise calibration means quality key cutting

The machine is equipped with sprung tracer point and adjustment ring nut for the perfect calibration of dimple keys. This ensures quality cutting results even when original keys are worn out. The tracer ring nut is nickel plated.

### Ergonomic and comfortable use

The levers and knobs of the machine are made of engineering plastics and, thanks to their ergonomic shape, guarantee comfortable grip and handling. The carriage shifting via rods and bush-



Cutting area optimized for a wide range of keys

ings is smooth and without plays for precise key cutting results.

### Lightweight, resistant and durable

Swift Plus is lightweight, compact and made of top-notch components. The cutters provided are TiN plated for better wear resistance, while the motor has a longer life compared to most machines of the same category available on the market.

### Perfect illumination of the work station

The integrated lamp guarantees a perfect lighting of the working area.

### Practical accessories area

On the upper part of the machine there's a handy

accessories compartment that makes it easy to reach the most frequently used tools.

### Safe for the operator

The mains switch of the machine is thermal-magnetic, a security device that prevents that the cutter automatically turns on after an abrupt interruption and reactivation of the electric power.

### Standard equipment

Dimple key cutting  
 ■ Tracer TE01  
 ■ Cutter FE01

Laser key cutting  
 ■ Tracer TE04  
 ■ Cutter FE04

Adapters for laser keys with narrow stems (Mercedes® HU64 type keys)

### Optional accessories

Tubular key cutting  
 ■ Tracer TE07  
 ■ Cutter FE07

More optional accessories available



Ring nut for tracer adjustment



Perfect illumination of the work station

## Swift Plus - Plus



Wide range of cut keys



Precise calibration



Ergonomic and compact



Illumination of the work station



Resistant and long-lasting



Spacious accessories area



Safe for the user

In compliance with current regulations, relating to industrial property, we hereby state that the trade-marks or trade names mentioned in this document are the exclusive property of authorized manufacturers of locks and users. Said trade marks or trade names are nominated only for the purpose of information so that any lock for which our keys are made can be rapidly identified. This document is reserved exclusively for professional key cutters who use Silca products. All information and illustrations in this document are for guidance only. Silca reserves the right to alter products designs, dimensions or into to improve the products quality. The contents of this document are fully protected by Copyright and may not be copied or reproduced in any form, without written permission from Silca S.p.A. Any controversy shall be settled by the Courts of Justice where the company has its headquarters, with express exclusion of any other court.

SILCA S.p.A. Via Podgora, 20 (Z.I.) - 31029 Vittorio Veneto (TV) - Italy  
 Telephone +39 0438 9136 Fax +39 0438 913800

**www.silca.biz**



dormakaba Group